

# 253 E LAKE STREET Bartlett, IL

Bartlett is easily accessible from county, state and interstate highways and is becoming a prime location for both large and small businesses and the residents who use them.

Located at a lighted intersection with strong traffic counts.

200' of frontage along Lake Street (Route 20).

High density residential in surrounding area.

Ideal for multi-tenant strip mall or freestanding quick-service restaurant w/drive-thru capability.



EDGEMARK

CONTACT  
INFORMATION

**MATT SMETANA**  
630.572.5632  
[msmetana@edgemarkllc.com](mailto:msmetana@edgemarkllc.com)

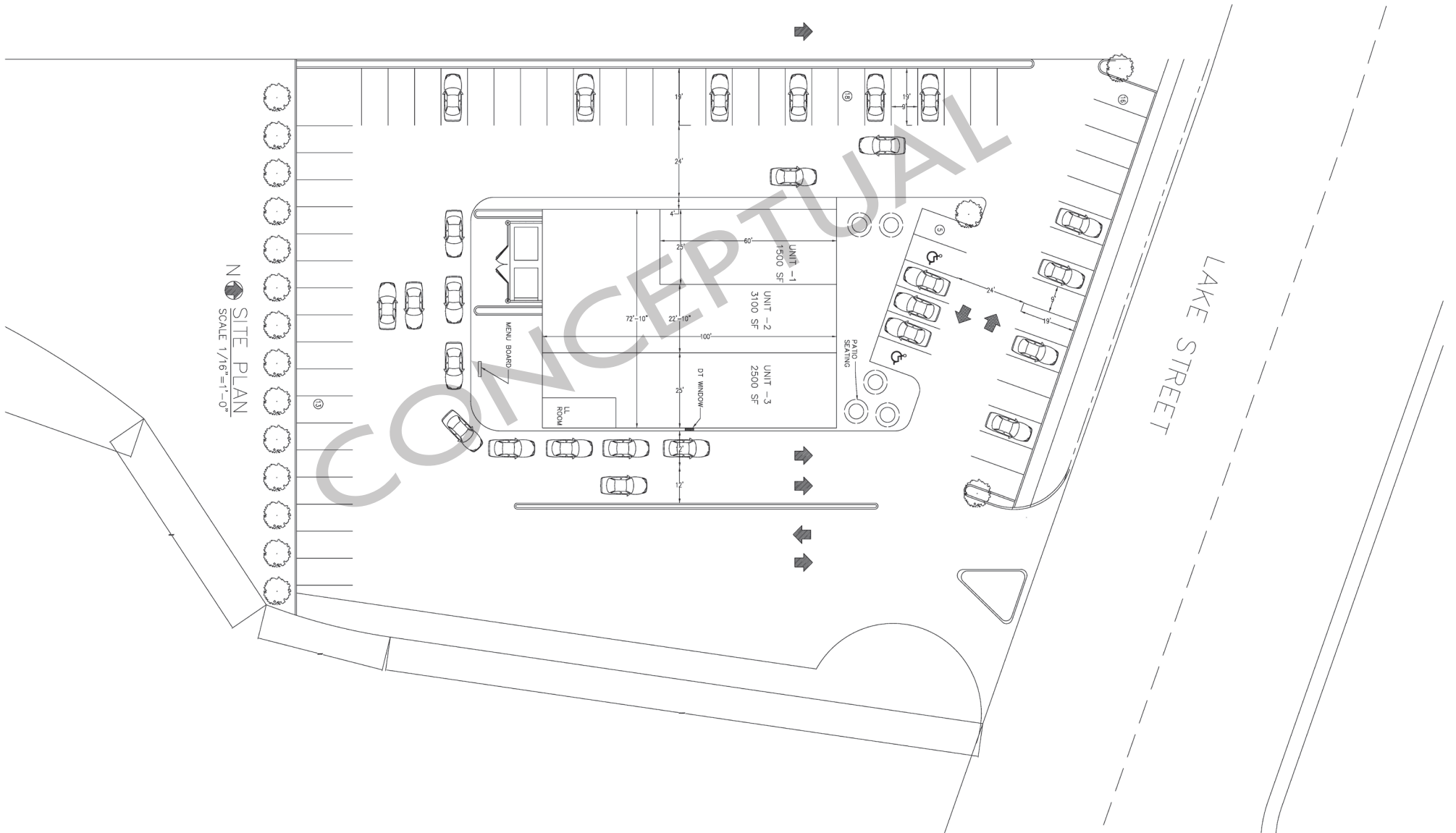
**RANDY KOTWICA**  
630.572.5613  
[rkotwica@edgemarkllc.com](mailto:rkotwica@edgemarkllc.com)



**EDGEMARK COMMERCIAL REAL ESTATE SERVICES LLC**  
2215 York Road, Suite 503  
Oak Brook, IL 60523  
P 630.472.1010 F 630.472.1019  
[www.edgemarkllc.com](http://www.edgemarkllc.com)

# CONCEPTUAL PLAN

## 253 E LAKE STREET, Bartlett, IL



CONTACT  
INFORMATION

**MATT SMETANA**  
630.572.5632  
msmetana@edgemarkllc.com

**RANDY KOTWICA**  
630.572.5613  
rkotwica@edgemarkllc.com

**EDGEMARK COMMERCIAL REAL ESTATE SERVICES LLC**  
2215 York Road, Suite 503  
Oak Brook, IL 60523  
P 630.472.1010 F 630.472.1019  
www.edgemarkllc.com



**DEMOGRAPHICS**

**POPULATION** 🧑

1 MILE	17,291
3 MILE	106,466
5 MILE	231,817

**AVERAGE HH INCOME** 💰

1 MILE	\$109,680
3 MILE	\$124,667
5 MILE	\$132,509



**CONTACT INFORMATION**

**MATT SMETANA**  
630.572.5632  
msmetana@edgemarkllc.com

**RANDY KOTWICA**  
630.572.5613  
rkotwica@edgemarkllc.com

The information contained herein has either been given to us by the owner of the property or obtained from sources that we deem reliable. We have no reason to doubt its accuracy but we do not guarantee it.